



Canadian Cottage



SHELTER
HOME SYSTEMS

Model Specifications

Standard Construction

- ⇒ 30 Year Architectural Fiberglass Shingles
- ⇒ Engineered Roof Trusses
- ⇒ 12" Residential Eaves on 3 Sides
- ⇒ 6 MIL Poly Vapour Barrier in Ceiling & Sidewalls
- ⇒ Coloured Metal Fascia
- ⇒ White Soffit
- ⇒ Cathedral Ceiling in Kitchen, Dining Room and Living Room
- ⇒ 2x6 @ 24" o.c. outside 8' Walls
- ⇒ 3/8" OSB Sheathing on Inside and Outside of Exterior Walls
- ⇒ Low Maintenance Vinyl Siding
- ⇒ Tubular Laminated Steel Frame: 8" (<16'x68') or 12" (>16'x68')
- ⇒ 2x10 Floor Joists (16' wide), 16" o.c.
- ⇒ Tongue and Groove OSB Floor Decking; Glued and Mechanically Fastened
- ⇒ Insulation: R-40 Ceiling, R-22 Wall, R48 Floor
- ⇒ Weatherproof Exterior GFI Receptacle
- ⇒ Frost Free Tap c/w Check Valve
- ⇒ Coach Lights at all Exterior Doors
- ⇒ Airtight Protocols
- ⇒ 36" Insulated No Light Front Door c/w Peephole & Storm Door
- ⇒ 5' Patio Door In Dining Area
- ⇒ White PVC "Low E" Windows with screens; 70x52 in Living Room
46x42 in Bedrooms

Exterior Features

- ⇒ 4 Pot Lights in Porch Area
- ⇒ Vinyl Shakes At Front Gable
- ⇒ Coloured Fascia/Corners and Columns
- ⇒ 6' Front Porch w/Aluminum Railing
- ⇒ Smart Trim Around Windows

Kitchen

- ⇒ 18 Cu. Ft. White Fridge with 2 doors & Top Freezer
- ⇒ 30" Electric White Range
- ⇒ Two Speed White Range Hood Vented to Exterior
- ⇒ White Dishwasher
- ⇒ Double Stainless Steel Sink with Single Lever Faucet

Bath

- ⇒ One Piece Fiberglass Tub/Shower (all bathrooms)
- ⇒ White Oval Drop-in Sink with Single Lever Pewter Faucet
- ⇒ Single Flush White Toilet with Lined Tank
- ⇒ Shower Rod and Curtain Liner (all bathrooms)
- ⇒ Pewter Towel Bar and Paper Holder
- ⇒ GFI Receptacles
- ⇒ Dehumidistat on Main Bath Fan

Interior Finish

- ⇒ Spraytex 1/2" Gyproc Ceilings
- ⇒ 100% Polyurethane Carpet in Living Room and Bedrooms
- ⇒ No Wax Vinyl Flooring Elsewhere
- ⇒ Wall Finish: Decorative Vinyl Over Gyproc (VOG) w/ Battens on Joints
- ⇒ Ceiling Trim: 1011 Profile
- ⇒ Baseboards: 1011 Profile
- ⇒ Window/Door Trim: 1011 Profile
- ⇒ Closets: Battens Throughout
- ⇒ Pewter Interior Door Hardware Throughout with Lever Handles
- ⇒ Pre-finished White Embossed Interior Doors
- ⇒ Wire Closet Shelving
- ⇒ 2" Vinyl Blinds Throughout
- ⇒ Toggle Light Switches
- ⇒ Modular Cabinets w/ Roller Drawer Hardware
- ⇒ PVC Wrap Cabinet Doors w/Pewter Knobs
- ⇒ Cabinet Crown Moulding: 510 Profile
- ⇒ 3" White Subway Kitchen Tile Backsplash (White Grout) Laminated Countertop

Utilities

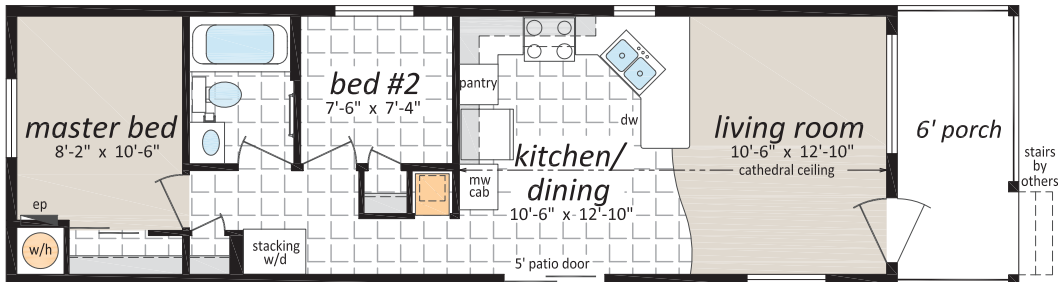
- ⇒ 40 GI Electric Water Heater
- ⇒ High Efficiency Natural Gas Furnace - Convertible
- ⇒ 100 Amp Electric Service Panel
- ⇒ Electric Conduit Through Floor
- ⇒ Incandescent Light Bulb Package
- ⇒ Programmable Thermostat
- ⇒ Copper Wiring Throughout
- ⇒ Plumbed & Wired For Stacking Washer And Dryer
- ⇒ Shut Off Valves on all Fixtures
- ⇒ Insulated Water Lines in Water Heater Cavity
- ⇒ Smoke/CO Alarms w/Battery Back Up in Hallways
- ⇒ Smoke Alarms (all bedrooms)

Canadian Cottage

CC-1444

14' x 50' 700 sq. ft.

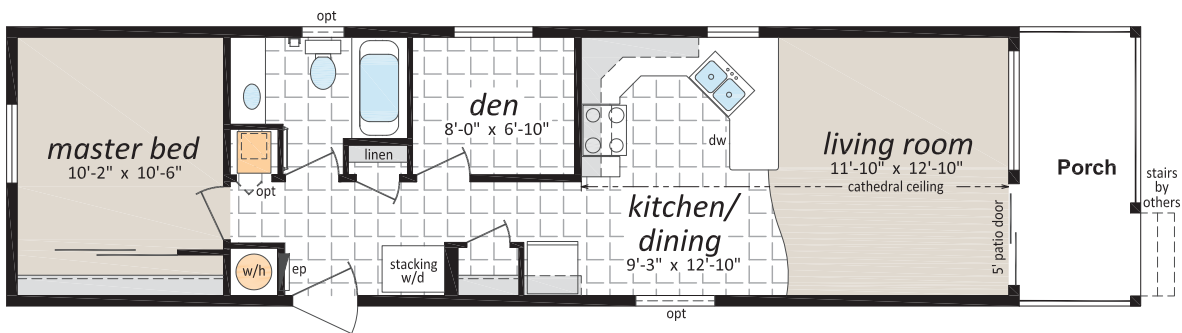
2 Beds, 1 Bath



CC-1456

14' x 56' 784 sq. ft.

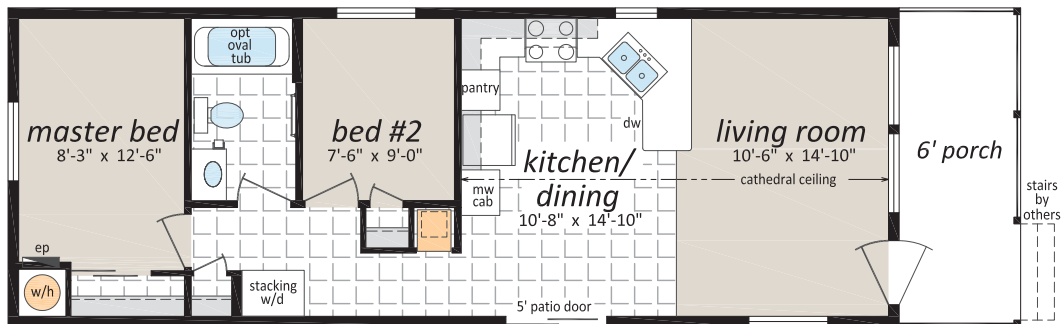
1 Bed, 1 Bath



CC-1644

16' x 50' 800 sq. ft.

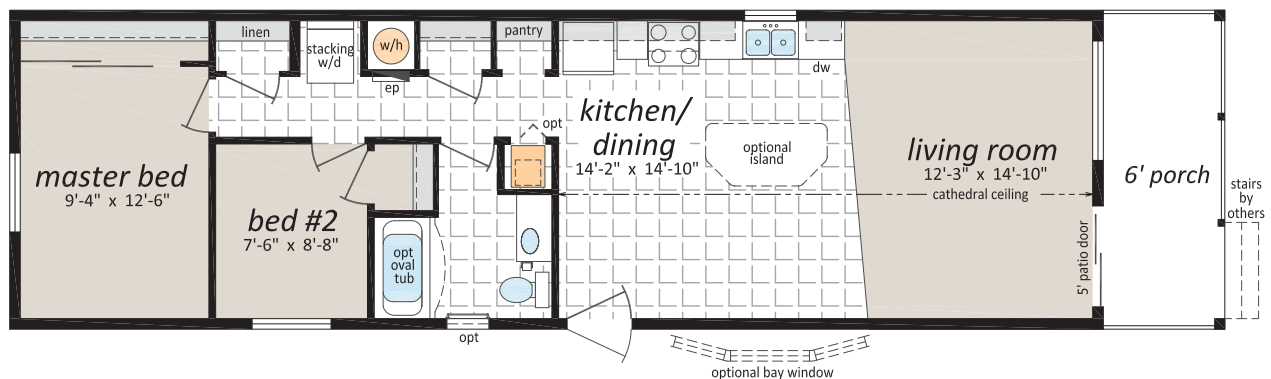
2 Beds, 1 Bath



CC-1654

16' x 60' 960 sq. ft.

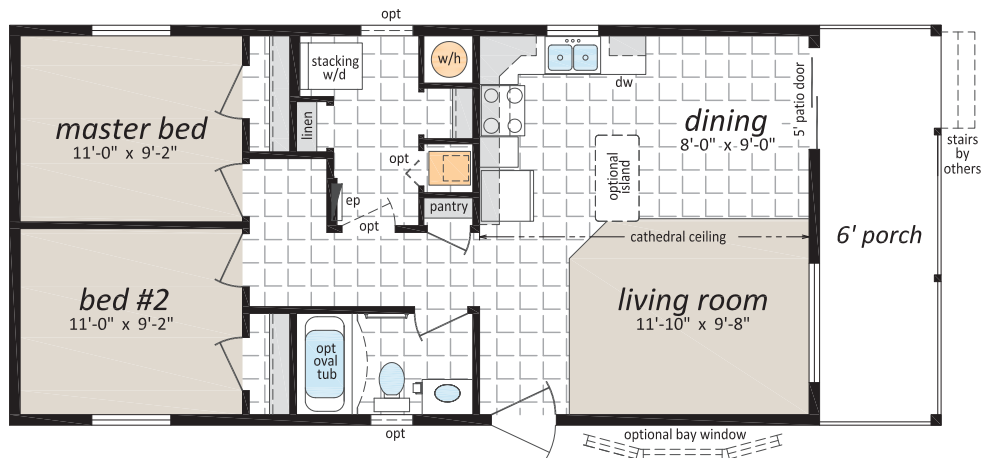
2 Beds, 1 Bath



CC-2040

20' x 46' 920 sq. ft.

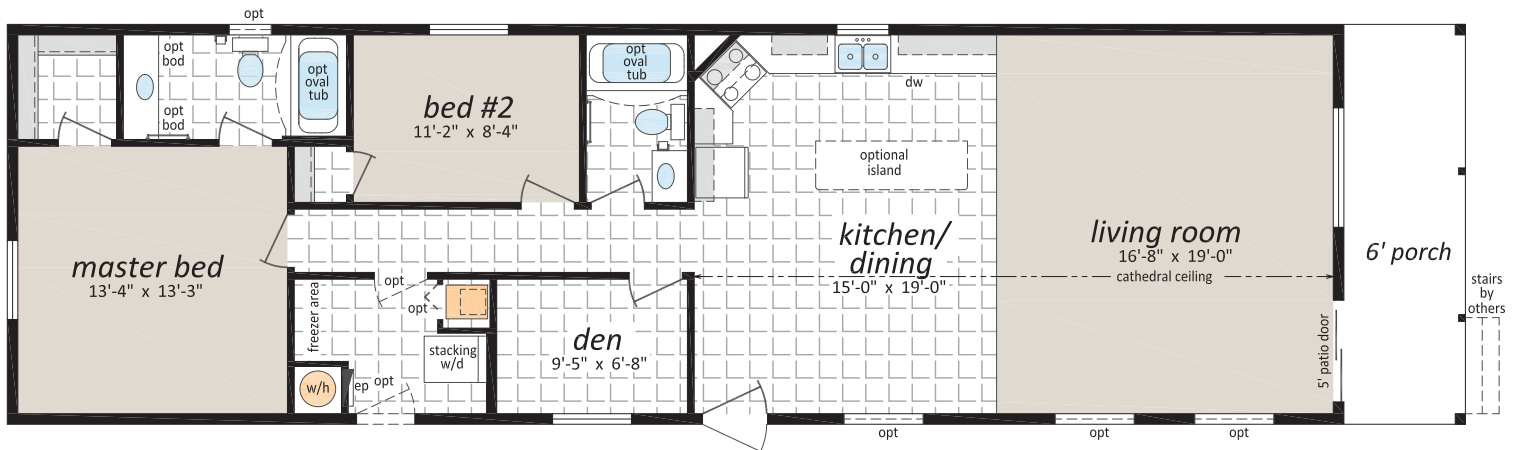
2 Beds, 1 Bath



CC-2066

20' x 72' 1,440 sq. ft.

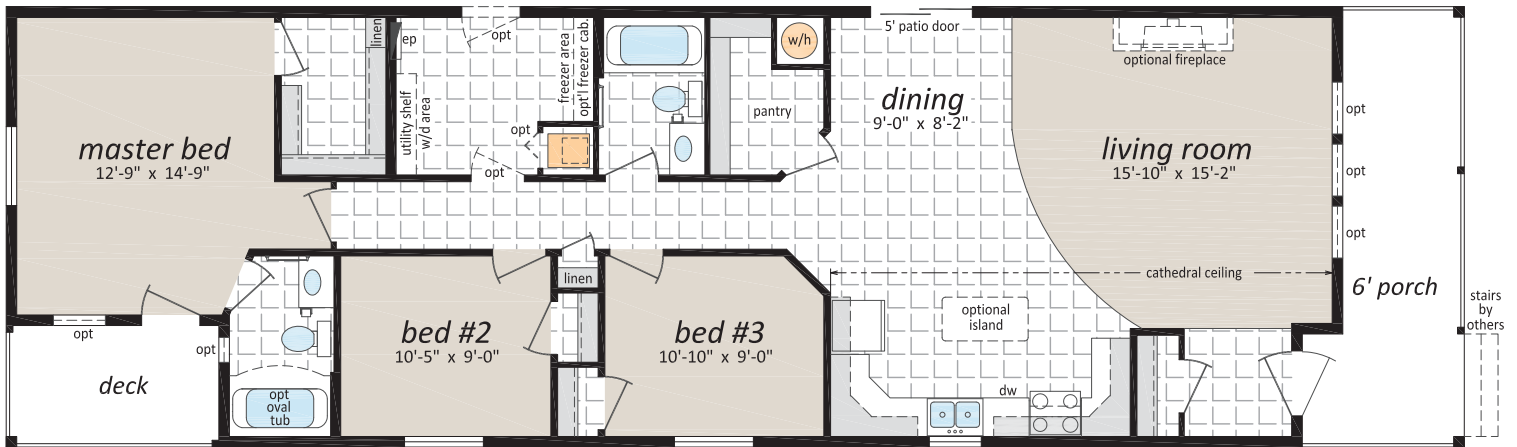
2 Beds, 2 Baths



CC-226601

22' x 72' 1,584 sq. ft.

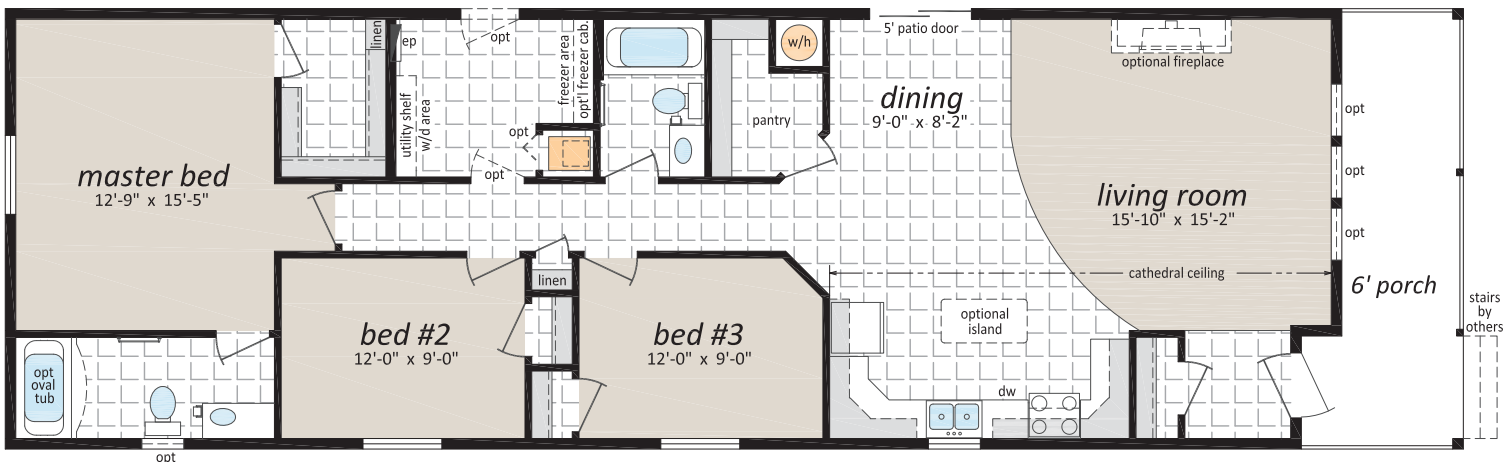
3 Beds, 2 Baths



CC-226602

22' x 72' 1,584 sq. ft.

3 Beds, 2 Baths



Canadian Cottage

Optional Features

Exteriors

- ☐ Skylights
- ☐ Deluxe Garden Doors
- ☐ 9 Light Exterior Door
- ☐ Polyurethane Stone Accents
- ☐ Octagon Windows
- ☐ Oval Exterior door w/vented sidelight
- ☐ "Panorama" Living Room Windows
c/w Diamond Cut Ceiling
- ☐ Sequoia Select Upgrade Vinyl Siding
- ☐ Turbine Vents
- ☐ Extra Exterior GFI
- ☐ High Snow Load

Interiors

- ☐ Painted Drywall Throughout Home
- ☐ Cathedral Ceiling in Master Bedroom
- ☐ Laminate Flooring
- ☐ Carpet in 2nd and 3rd Bedrooms
- ☐ French Doors
- ☐ Mirrored Closet Doors
- ☐ Freezer Cabinets
- ☐ Utility Room Door c/w Grill
- ☐ Ceiling Fan with Lights
- ☐ 2 - 4' Ceiling Mount or Recessed Fluorescent
Lights
- ☐ Decora Switch Package
- ☐ 2" PVC Blinds
- ☐ Programmable Thermostat
- ☐ Benton Style Doors

Bathroom

- ☐ Glass Mosaic Tile Back splash
- ☐ Ceramic Tile Back splash
- ☐ Jetted Oval Tub
- ☐ Jetted One Piece Tub and Shower
- ☐ 60" Shower c/w Glass Doors
- ☐ Accessible Toilet
- ☐ Grab Bars
- ☐ Full tiled shower w/sliding glass doors
- ☐ Vessel Vanity Sink w/ 90 degree Faucet

Kitchen

- ☐ Raised Panel Solid Wood Cabinet Doors
- ☐ European Stainless Steel Range hood
- ☐ Etched Glass Cabinet Doors
- ☐ China Cabinets and Hutches
- ☐ Under Cabinet Lighting
- ☐ Upgrade High Definition Laminate Counter tops
- ☐ Ceramic Tile Back splash
- ☐ Glass Mosaic Tile Back splash
- ☐ Tip Out Soap Tray Below Kitchen Sink
- ☐ 4 Bulb Track Light c/w Dimmer Switch
- ☐ 24" Fluorescent Light Above Kitchen Sink
- ☐ Pot and Pan Drawers
- ☐ Combination Microwave and Range hood
- ☐ Goose Neck Moen Faucet

Utilities

- ☐ Gas Fireplace complete with Air Circulating Fan
- ☐ Gas Water Heater
- ☐ Electric Furnace
- ☐ Oil Gun Furnace
- ☐ Self Cleaning Range
- ☐ Two Door Side By Side Refrigerator
- ☐ Handi-Hite Bottom Mount Refrigerator
- ☐ Front Load Washer and Dryer
- ☐ Central Vacuum System
- ☐ Roughed in for Central Vacuum
- ☐ Air Conditioner Ready Furnace
- ☐ 2 1/2 Ton Air Conditioner
- ☐ Extra Telephone Jacks
- ☐ Surge Protector
- ☐ Garage Ready Package

Check off your extras ...

... and we will take care of the rest!



Canadian Cottage



Authorized Retailer:



P.O. Box 845 #200 Hwy 18 West
Estevan, SK S4A 2A7
www.shelterhomes.ca



This is not a fully detailed specification. SRI Homes reserves the right to change specifications, designs, materials and suppliers without notice and without incurring obligation. Information contained herein is from data available at the time of printing. Square footage and dimensions are approximate. Photos and renderings may show optional features. Printed in Canada 1500/05/19