

# The Design "5" Series

## Sectional Homes



Proudly made in  
Canada  
to Canadian  
Standards



**SHELTER**  
HOME SYSTEMS



# The Design "5" Series



## WHY SRI?

The Estevan Plant began building SRI Homes in 1978 and 13,000 homes later is continuing to supply affordably priced, quality built homes to Canadian families.

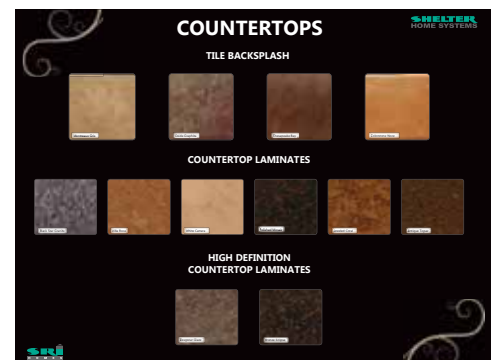
## CHOICES

Once you choose your Design 5 floorplan, then the many other option choices begin. Exterior and interior decor choices to make sure your new home is just right for you!



## QUALITY & AFFORDABILITY

An SRI factory built home is an affordable solution. Factory building means your home is on budget and on time. Your SRI Retailer takes care of delivery and set up leaving you to simply "move in". For additional peace of mind, every SRI home is covered by a ten year warranty supplied by Progressive Home Warranty.



## ARE YOU READY . . .

. . . to turn the pages and find out more about SRI's Design 5 homes?



# The Design "5" Series

## Standards and Specifications

### Exterior

- ◆ Maintenance Free Full Vinyl Siding
- ◆ Engineered Roof Trusses
- ◆ Architectural Fiberglass Shingles (30 Year Warranty)
- ◆ 3/12 Pitch Engineered Roof Trusses
- ◆ Perimeter Eave and Continuous Ridge Venting System
- ◆ Colour Coordinated Shutters on Front Door Side Windows
- ◆ 12" Residential Eaves
- ◆ 3/8" OSB Sheathing on Inside of Exterior Walls
- ◆ 2 x 6 Exterior Walls
- ◆ 2 x 8 Floor Joists
- ◆ Frost Free Exterior Tap complete with Check Valve
- ◆ White Coach Lights at Both Exterior Doors
- ◆ Door Chimes at both Exterior Doors
- ◆ White PVC "Low E" Windows with Screens
- ◆ 36" Steel Insulated Exterior Door at Front Entry complete with Peephole
- ◆ 32" Steel Insulated Exterior Door at Rear Door complete with Peephole
- ◆ Aluminum Storm Doors at Front and Rear Entries
- ◆ Two Weatherproof Outside Receptacles protected with G.F.I.

### Interior

- ◆ T&G OSB Floor Decking, Glued and Screwed
- ◆ R40 Insulation in Ceiling
- ◆ R-20 Insulation in Walls
- ◆ R-26 Insulation in Floors
- ◆ 6 mil Poly Vapour Barrier in Ceilings and Sidewalls
- ◆ Spaytexed 1/2" SR Gyproc Ceilings
- ◆ Cathedral Ceiling in Living Room, Kitchen and Dining Room

### Interior (cont'd)

- ◆ Polyurethane Carpet in Living Room and Master Bedroom
- ◆ No Wax Vinyl Floor Coverings
- ◆ Copper Wiring Throughout
- ◆ Pewter Hardware Package Throughout
- ◆ Upgrade Designer Drapery Package #2 including Blinds on all Windows
- ◆ Utility Cabinets above Washer and Dryer
- ◆ Wire Closet Shelving
- ◆ Prefinished Interior Doors
- ◆ Lever Door Handles throughout
- ◆ Trim Package #2



### Kitchen

- ◆ 18 cu. ft. 2-door Frost Free Refrigerator
- ◆ 30" Glass Door Electric Range
- ◆ Rangehood with Two Speeds and Light, Vented to the Exterior
- ◆ Rolled Drawer Hardware
- ◆ Double Stainless Steel Kitchen Sink with Single Lever Faucet

### Bathroom

- ◆ One Piece Wall Tub and Shower
- ◆ White Bath Fixtures with Single Lever Faucets
- ◆ Dehumidistat on Main Bath Fan
- ◆ Exhaust Fan Vented to the Exterior
- ◆ Shower Rod and Curtain in all Bathrooms
- ◆ Pewter Towel Bar and Paper Holder
- ◆ G.F.I. Receptacle
- ◆ Shut Off Valves on All Fixtures

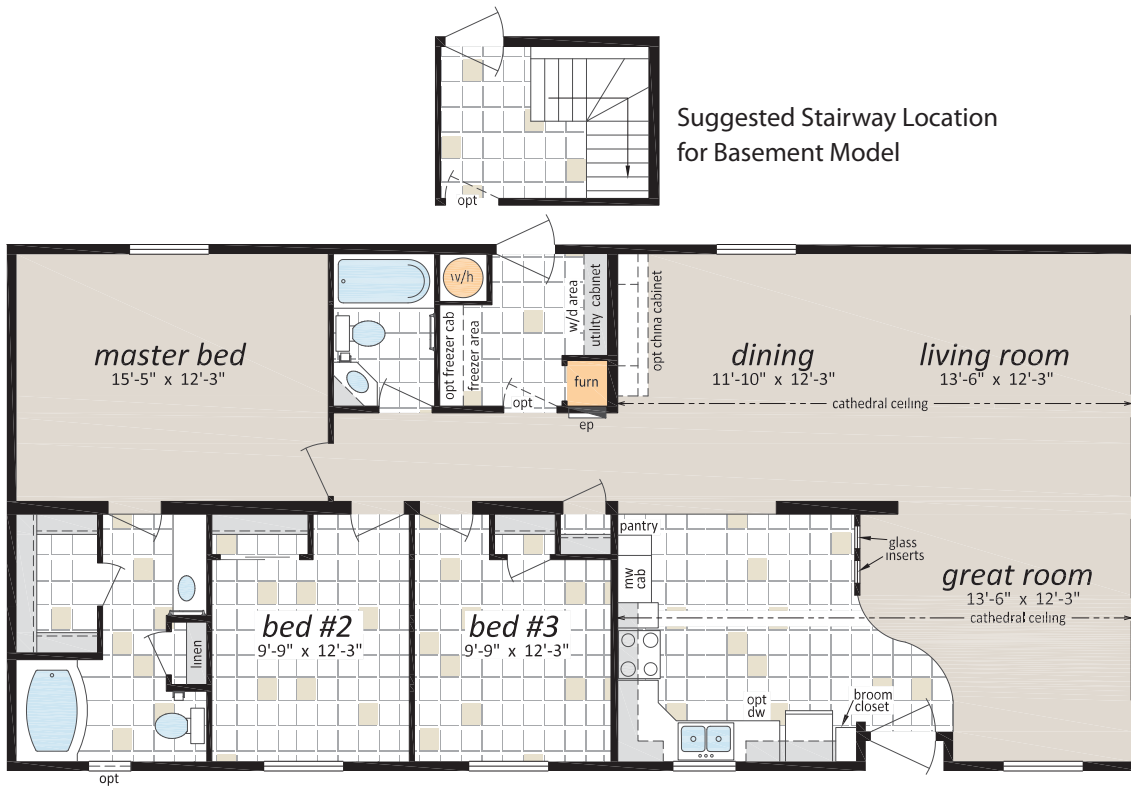
### Utilities

- ◆ High Efficiency Natural Gas Furnace with Electronic Ignition
- ◆ 40 Gallon Natural Gas Water Heater
- ◆ 100 Amp Electrical Service Panel
- ◆ Electrical Conduit Through Floor
- ◆ Light Bulb Package
- ◆ Life Saving Smoke Detector(s)
- ◆ Living Room and Family Room Wired for Ceiling Fan with Separate Light Switch
- ◆ Smoke/Co Alarms with Battery Back up in Hallways
- ◆ Smoke Alarms in all Bedrooms

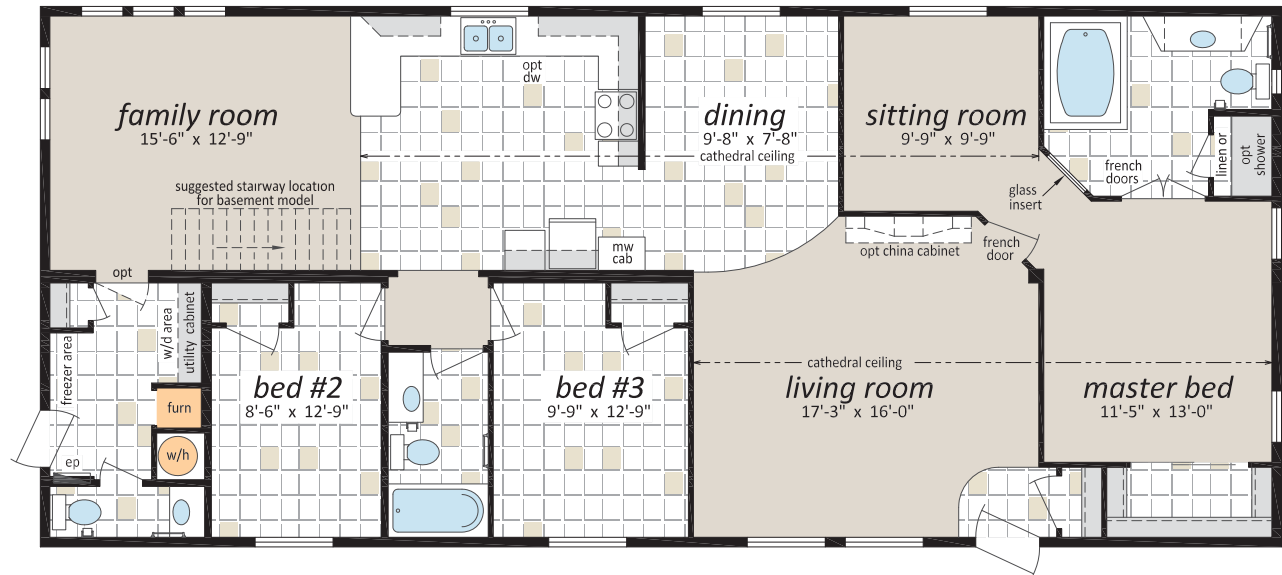


# The Design "5" Series

DE-353 • 26' X 56' • 1456 Sq. Ft.

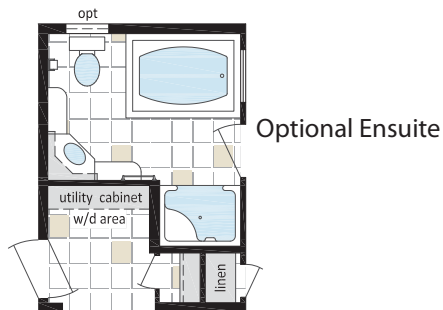
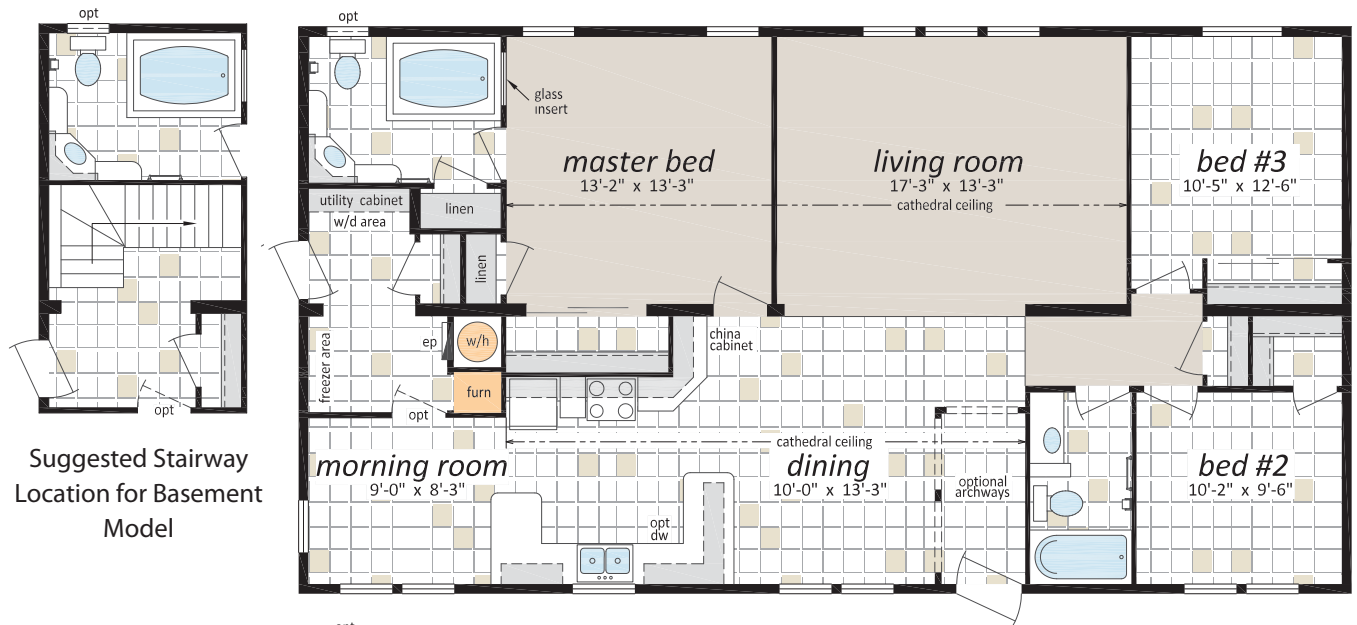


DE-355 • 27' X 62' • 1674 Sq. Ft.

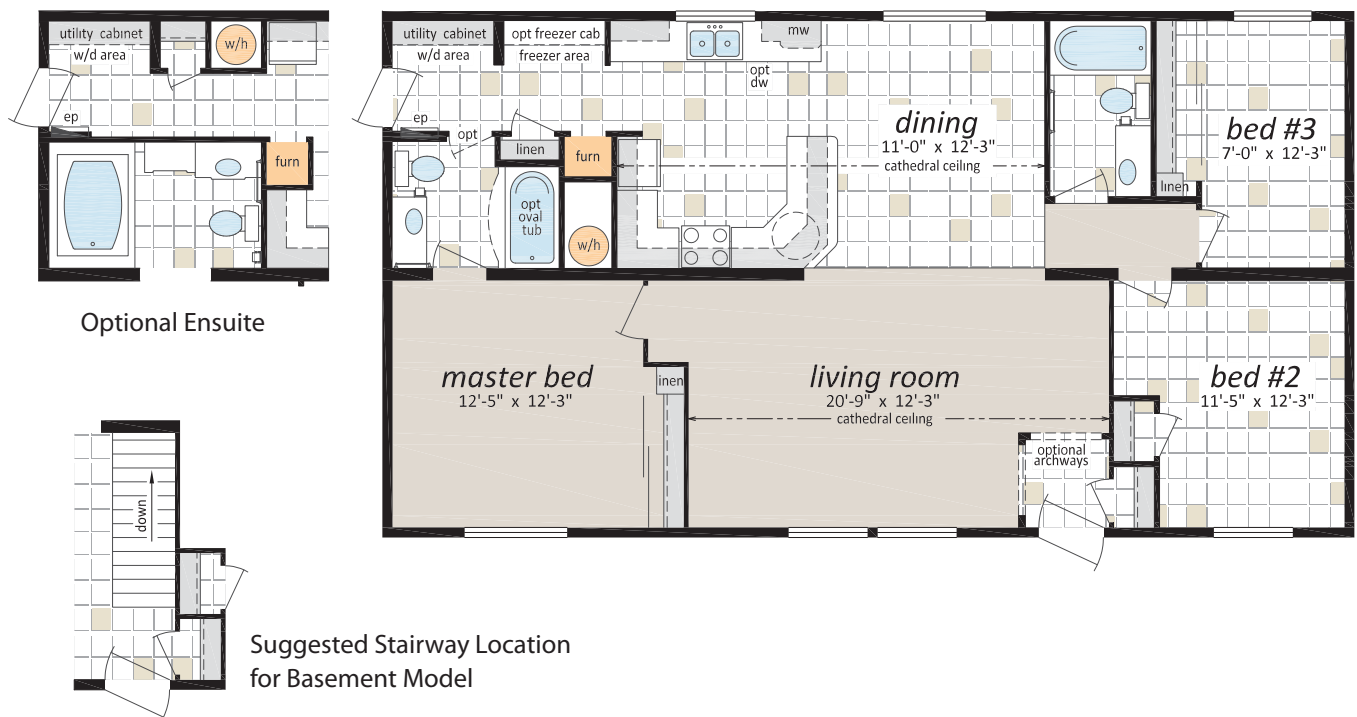


# The Design "5" Series

DE-357 • 28' X 52' • 1456 Sq. Ft.

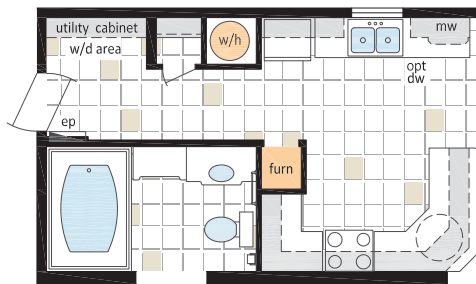
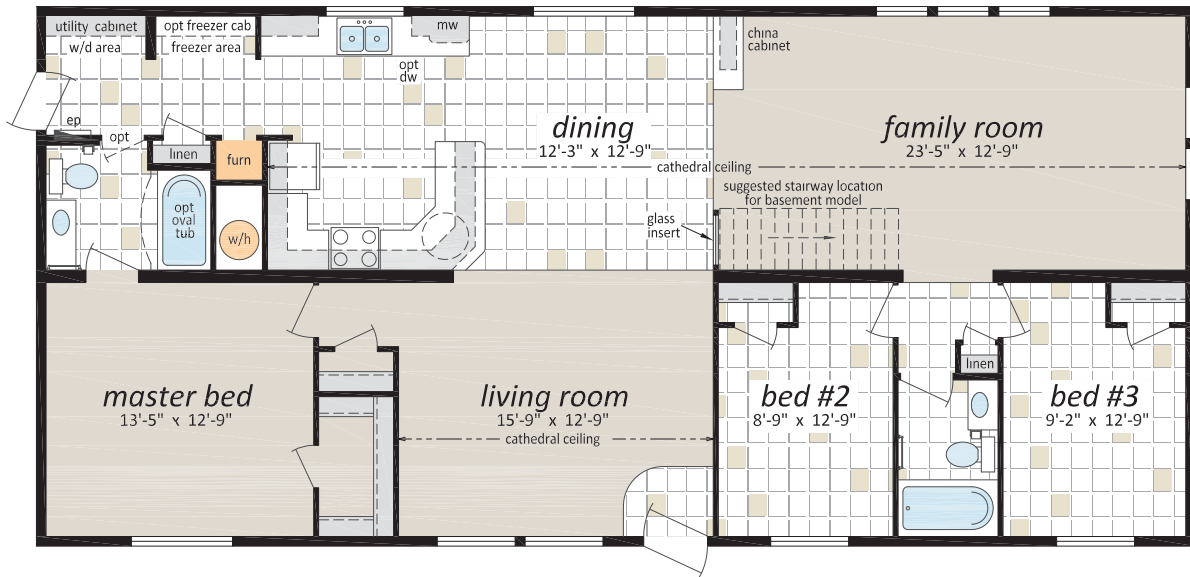


DE-358 • 26' X 48' • 1248 Sq. Ft.



# The Design "5" Series

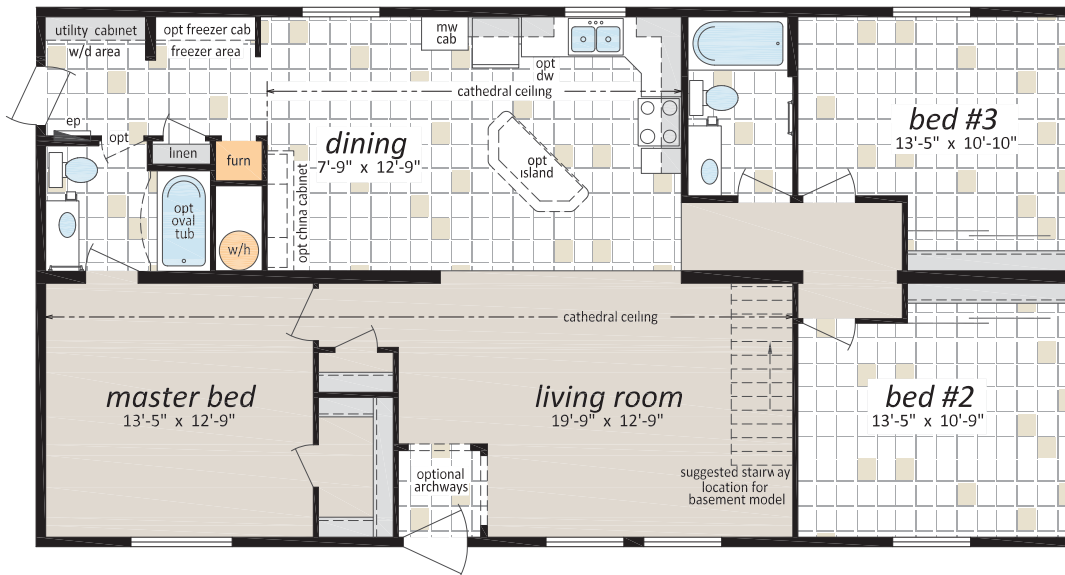
DE-359 • 27' X 58' • 1566 Sq. Ft.



Optional Ensuite

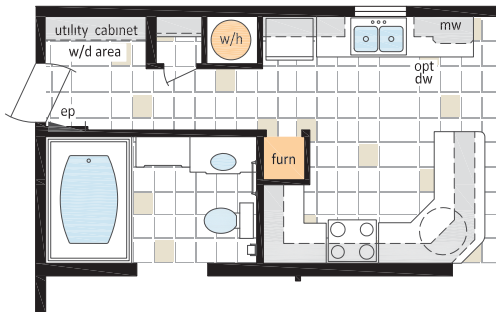
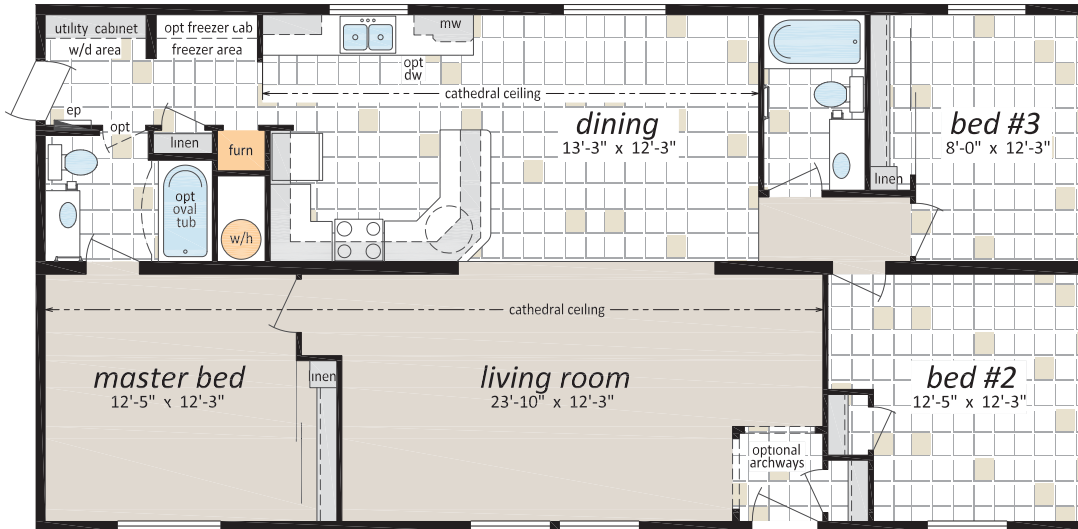


DE-360 • 27' X 52' • 1404 Sq. Ft.

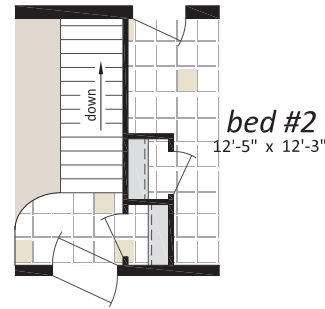


# The Design "5" Series

DE-361 • 26' X 52' • 1352 Sq. Ft.



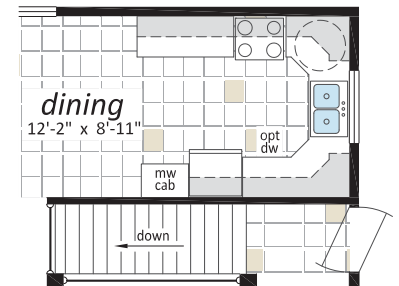
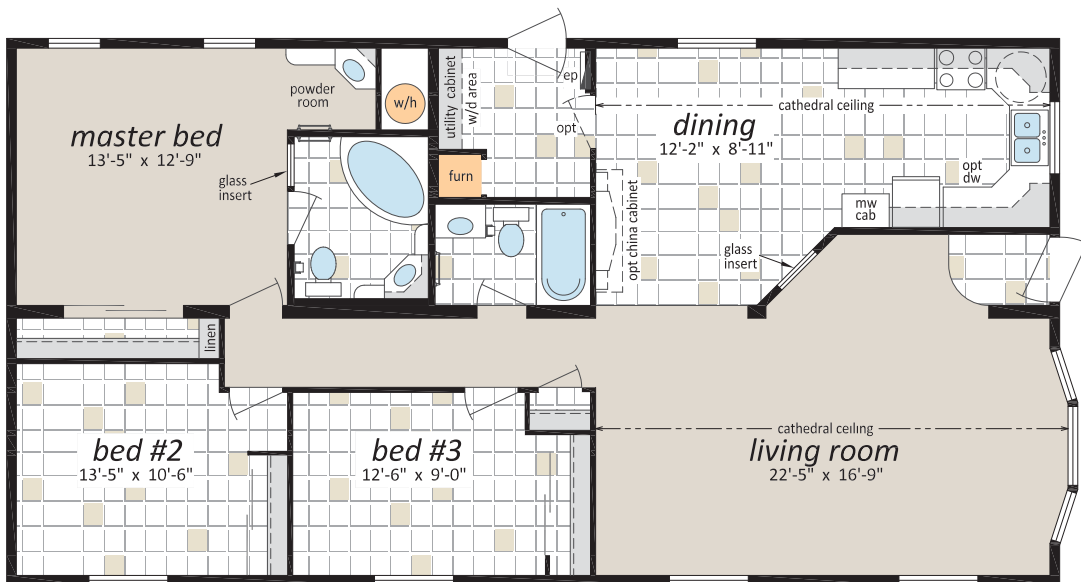
Optional Ensuite



Suggested Stairway Location for Basement Model



DE-362 • 27' X 52' • 1404 Sq. Ft.

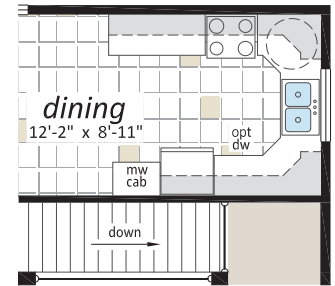
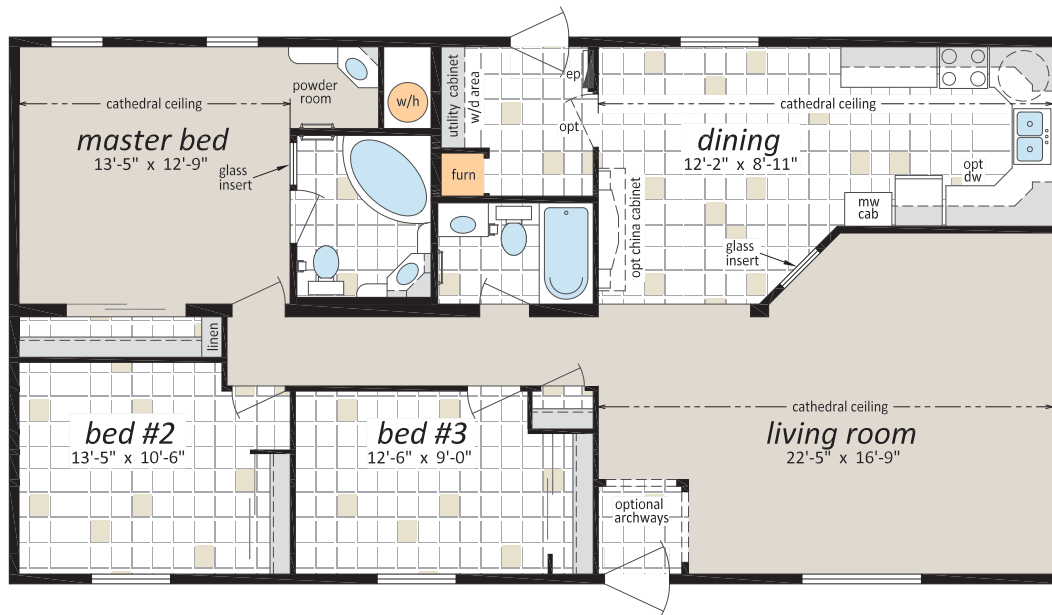


Suggested Stairway Location for Basement Model



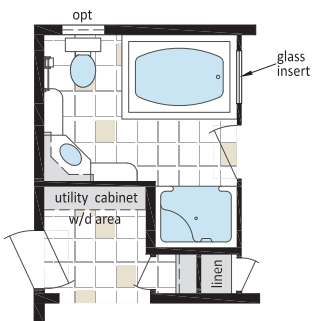
# The Design "5" Series

DE-363 • 27' X 52' • 1404 Sq. Ft.

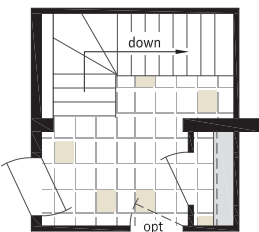


Suggested Stairway  
Location for Basement  
Model

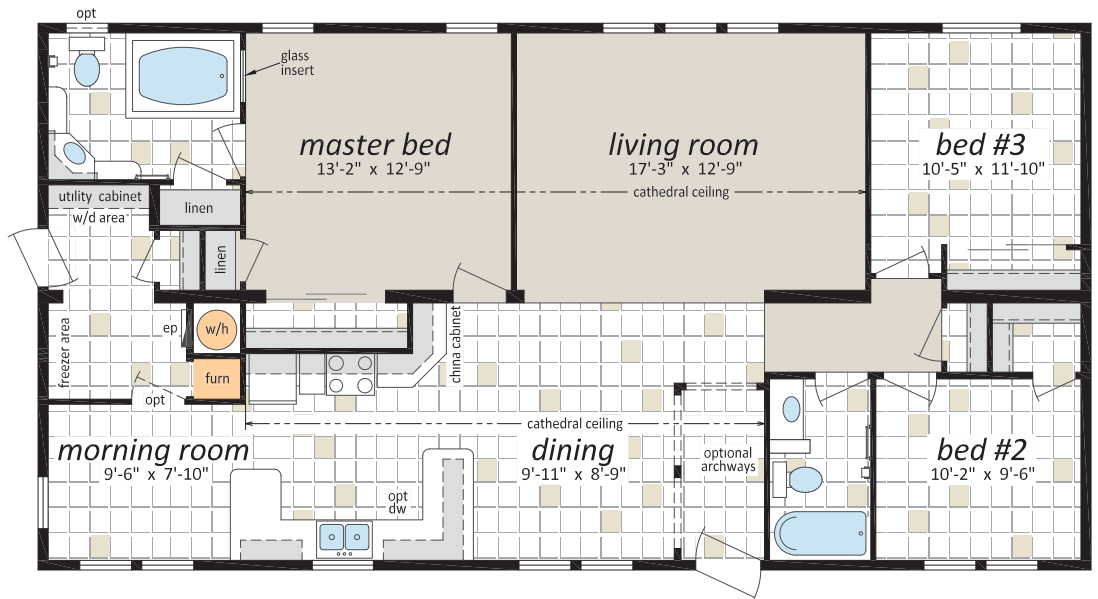
DE-364 • 27' X 52' • 1404 Sq. Ft.



Optional Ensuite



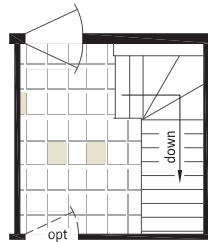
Suggested Stairway  
Location for Basement  
Model



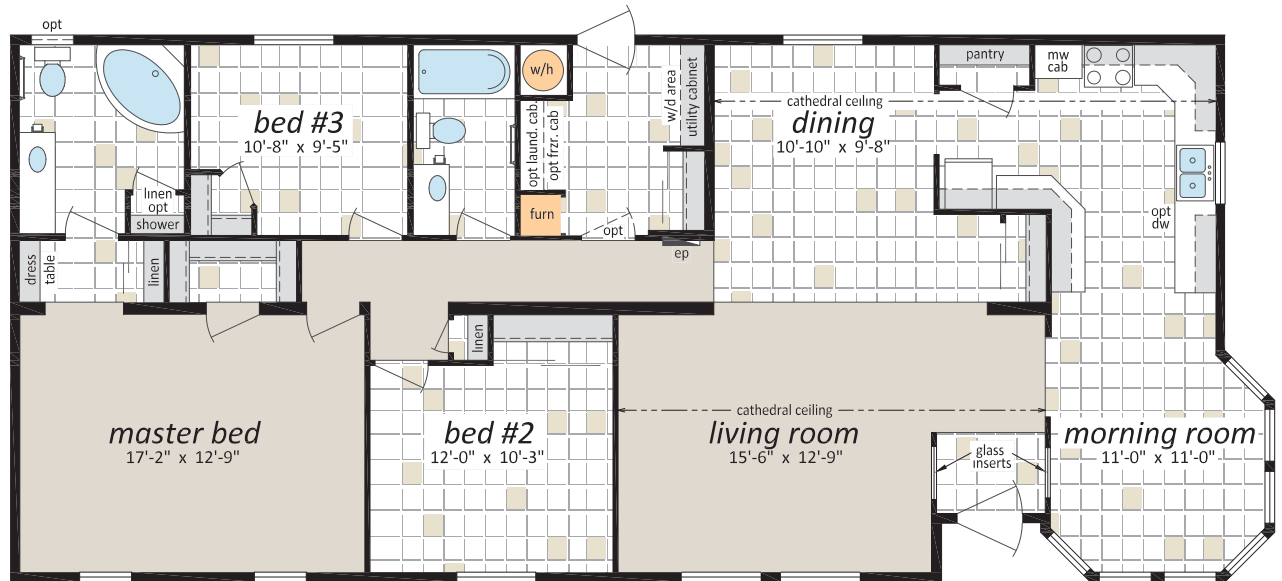


# The Design "5" Series

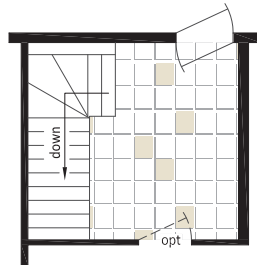
DE-365 • 27' X 60' • 1620 Sq. Ft.



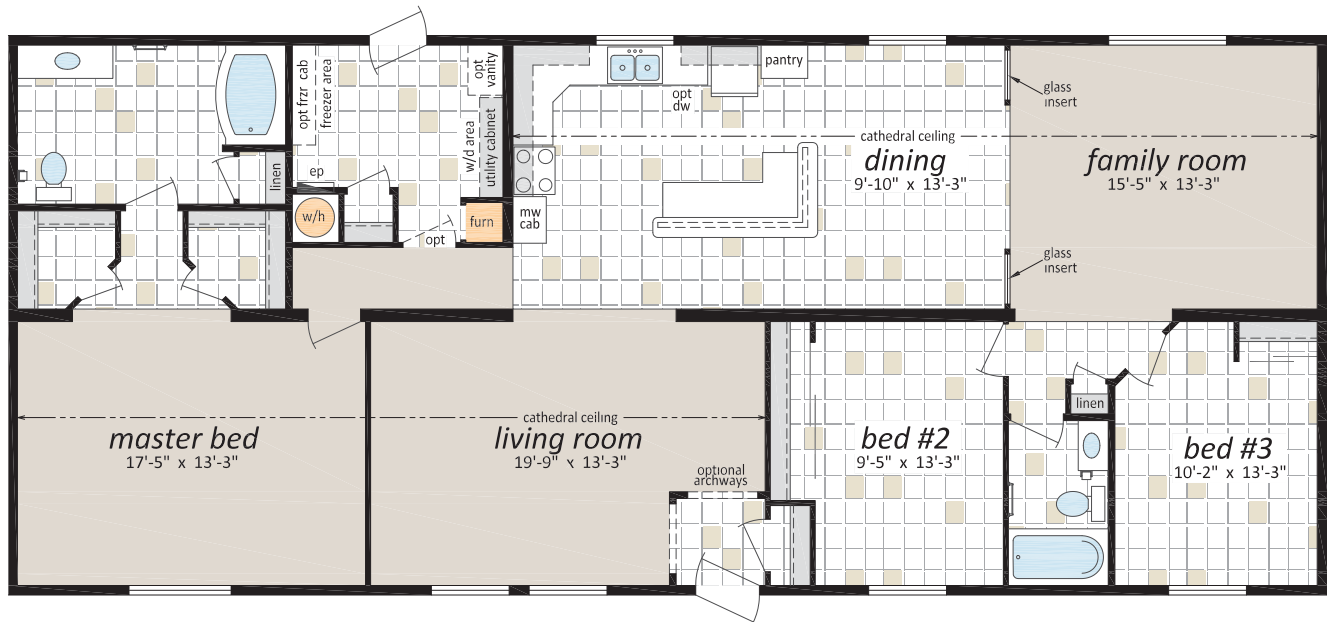
Suggested Stairway  
Location for Basement  
Model



DE-366 • 28' X 66' • 1848 Sq. Ft.

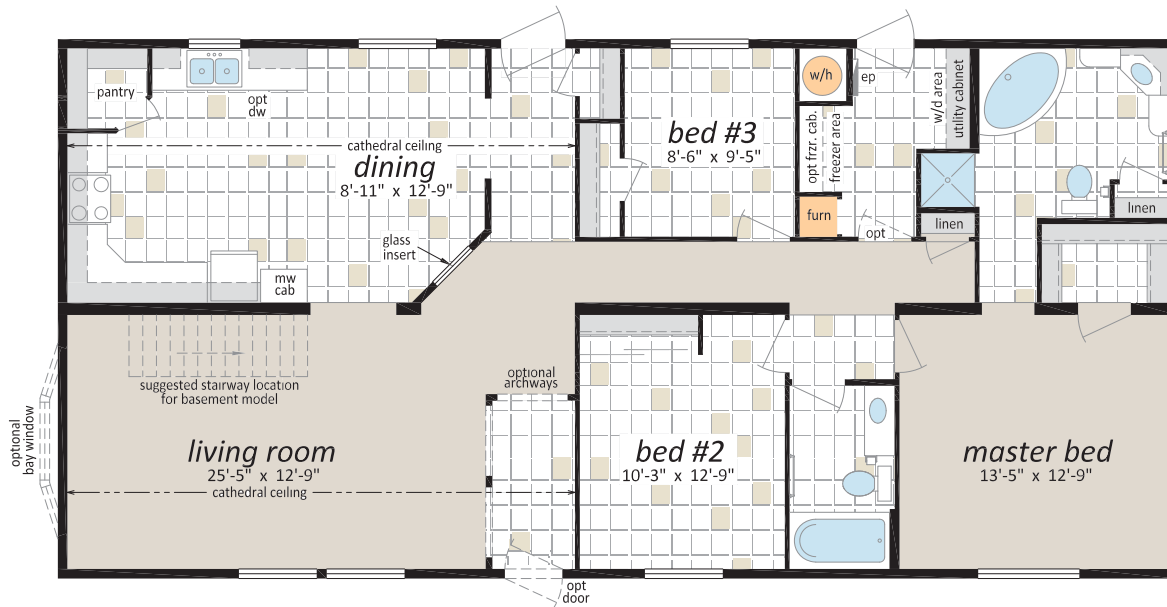


Suggested Stairway  
Location for Basement  
Model

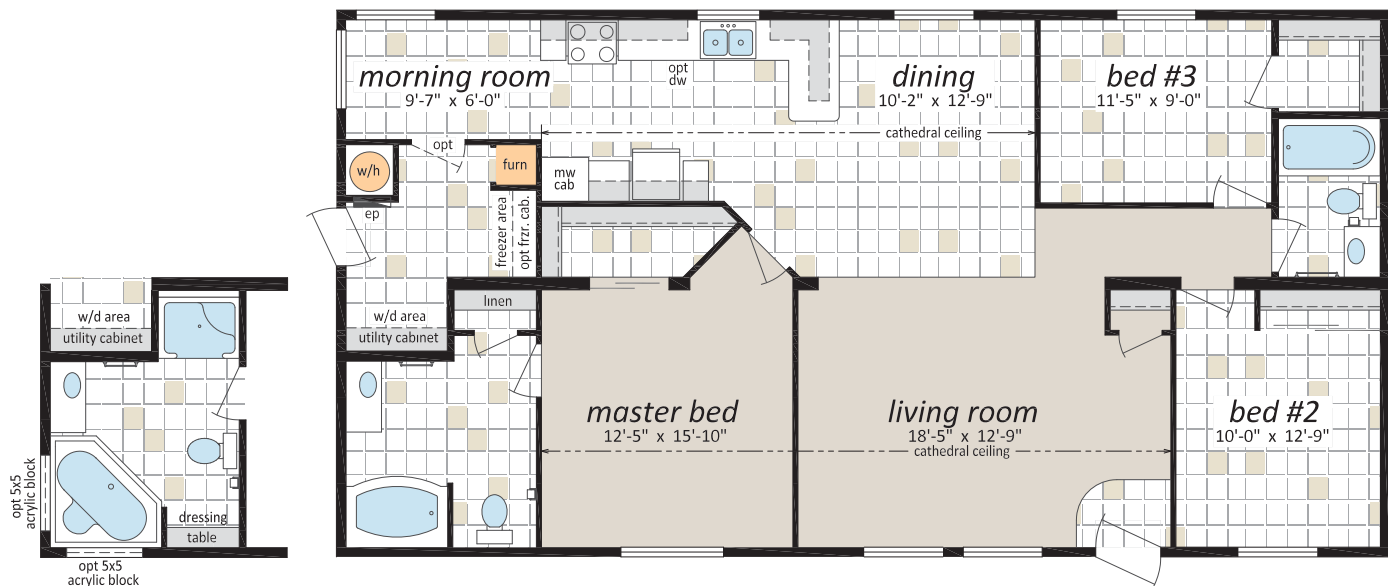


# The Design "5" Series

DE-367 • 27' X 56' • 1512 Sq. Ft.

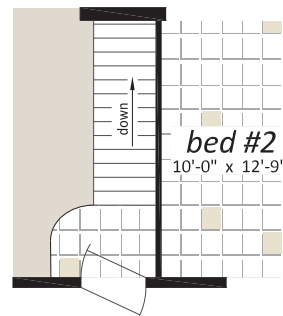


DE-368 • 27' X 52' • 1404 Sq. Ft.



Optional Ensuite

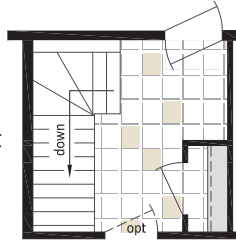
Suggested Stairway  
Location for Basement  
Model



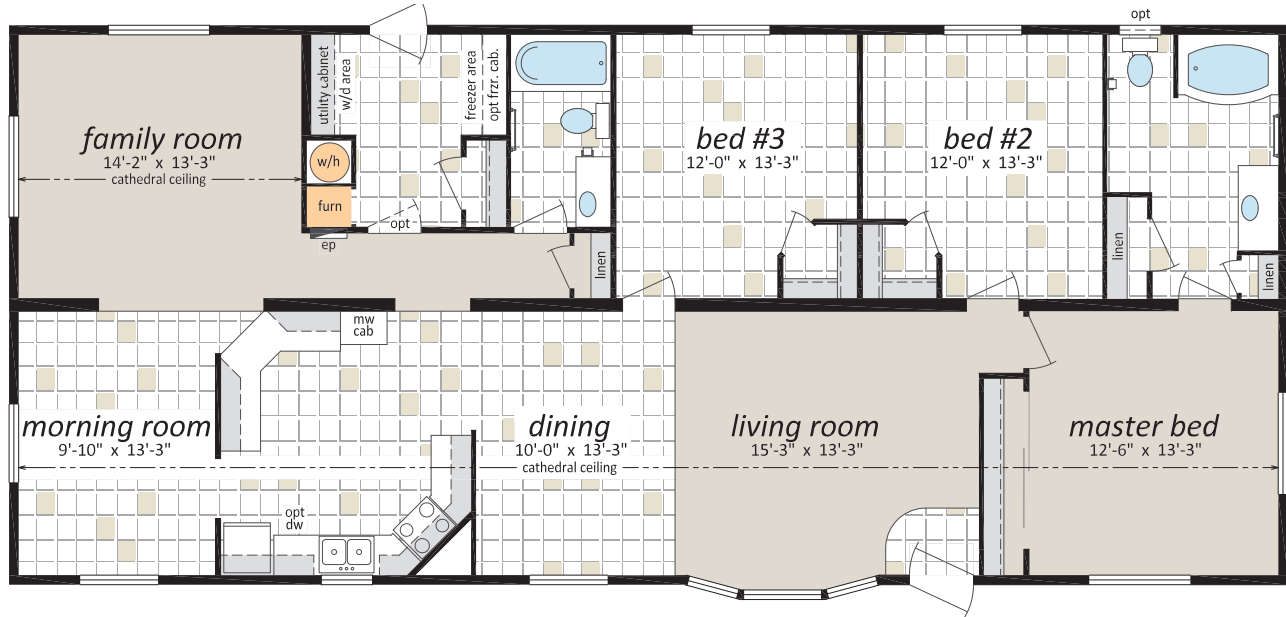
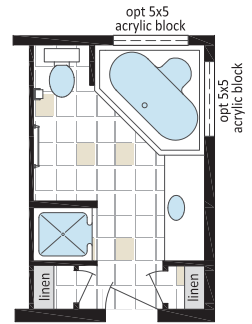
# The Design "5" Series

DE-369 • 28' X 64' • 1792 Sq. Ft.

Suggested Stairway  
Location for Basement  
Model



Optional Ensuite



## Did you know?

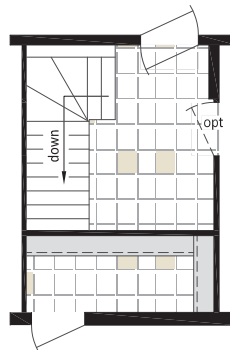
SRI factory-built housing is not subjected to the elements such as rain or snow during the construction process. Site built homes can sit in rainstorms for weeks without a shingle on them.

# The Design "5" Series

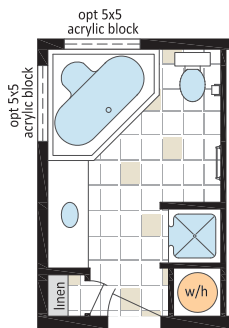
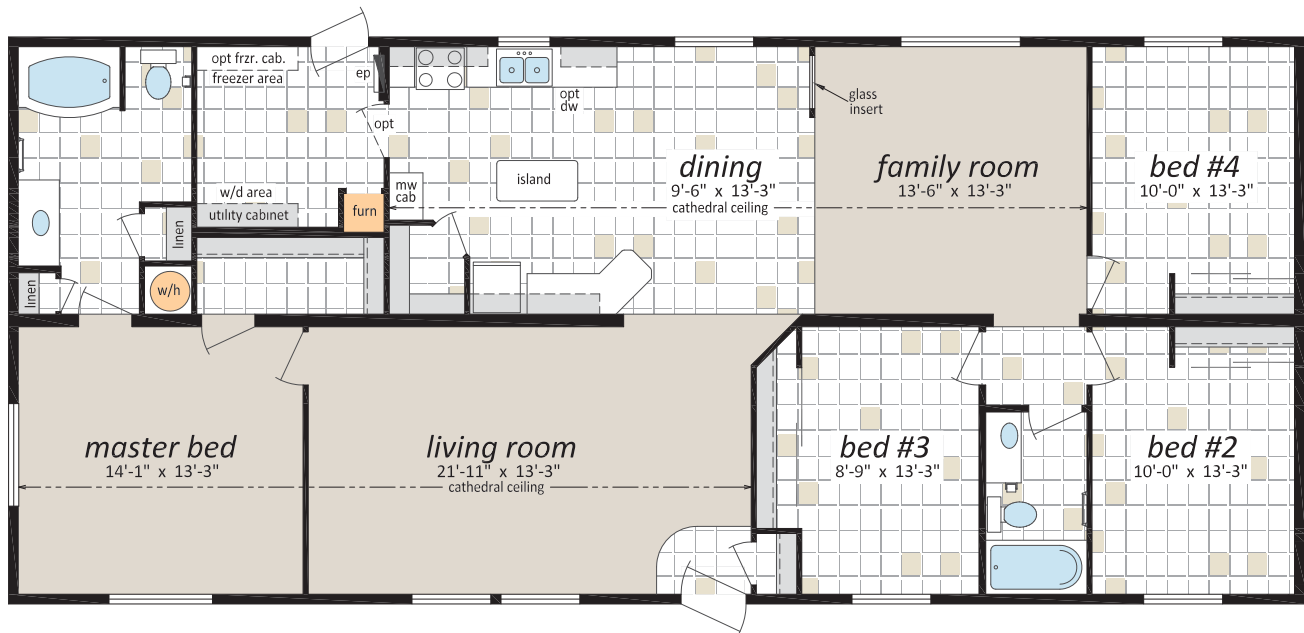
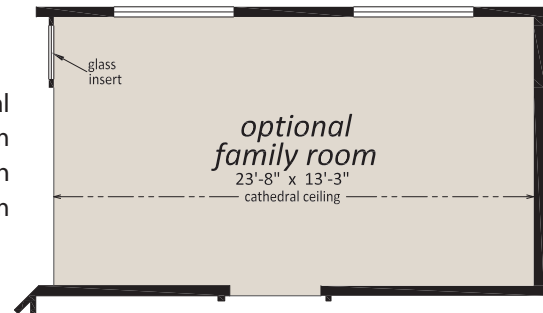


DE-370 • 28' X 64' • 1792 Sq. Ft.

Suggested Stairway  
Location for  
Basement Model



Optional  
Family Room  
with no 4th  
Bedroom



Optional Ensuite

## Did you know?

Factory construction offers many opportunities for economizing and increasing efficiency in the production process and thereby passing the savings on to the home buyer.

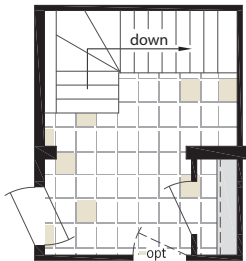


# The Design "5" Series

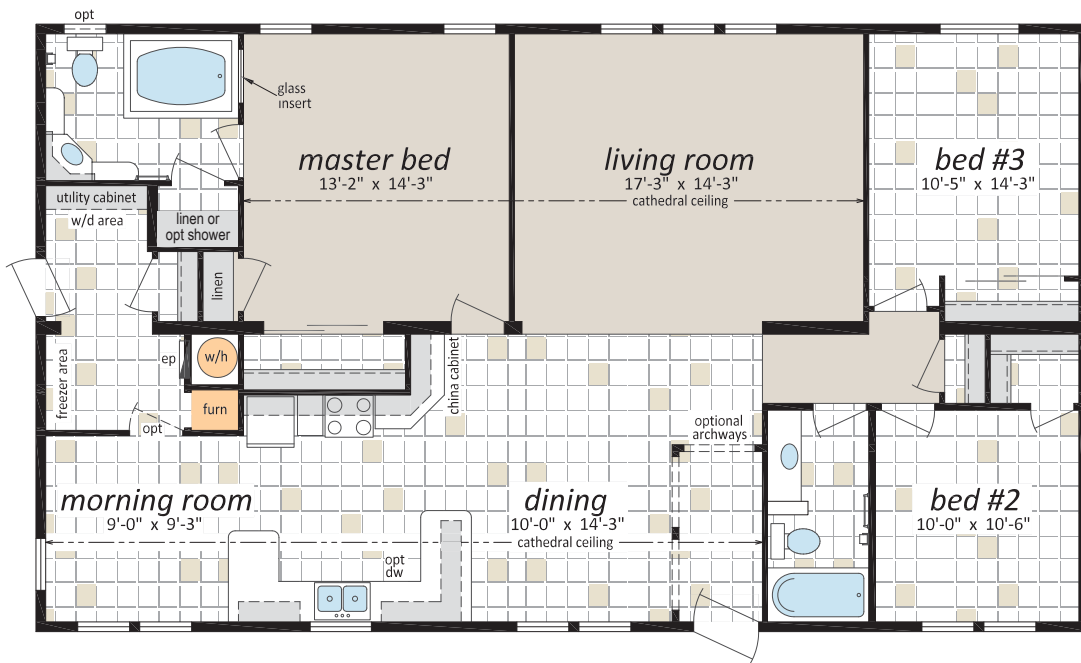
DE-371, 30' X 52', 1,560 Sq. Ft.

## Did you know?

All SRI Homes are built according to a detailed procedure manual. This procedure manual depicts and explains every standard detail in an SRI home. All procedures are reviewed and pre-approved by CSA before they can be used.



Suggested Stairway  
Location for  
Basement Model



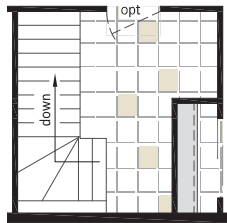
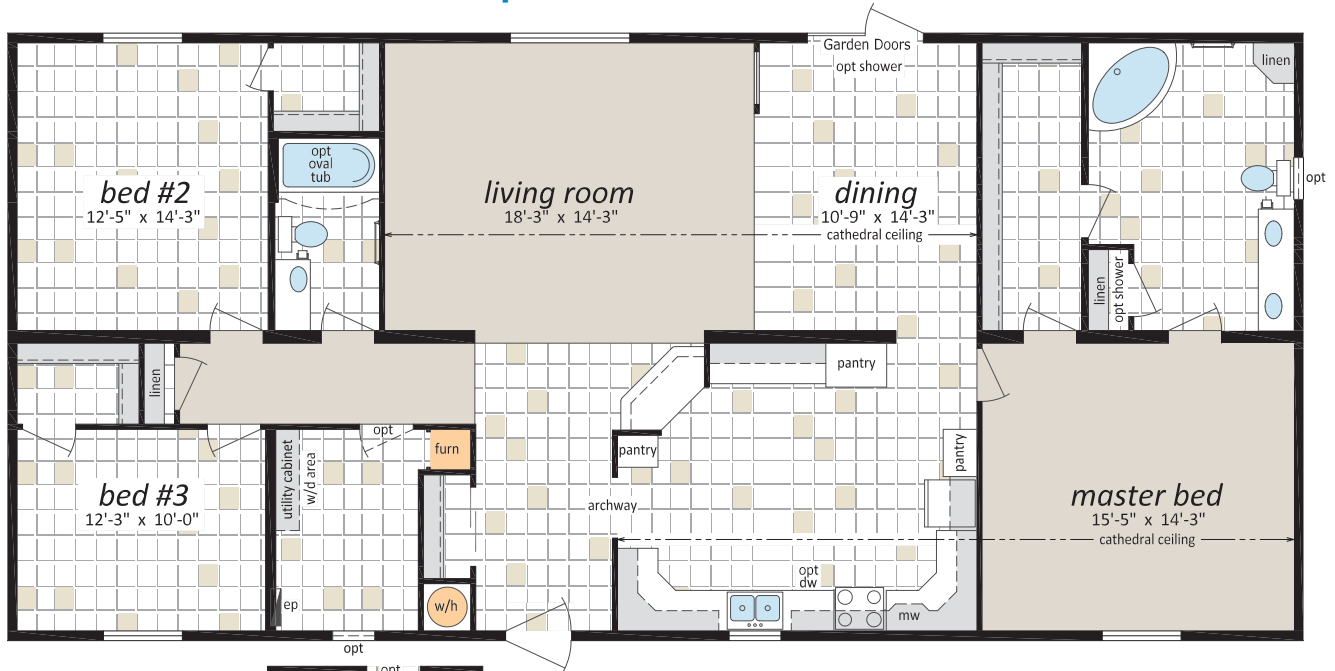
## Did you know?

Shelter Home Systems in Estevan, SK is the founding factory of SRI Homes. Since 1978 this factory has been building affordable, quality built homes for Canadian families.



# The Design "5" Series

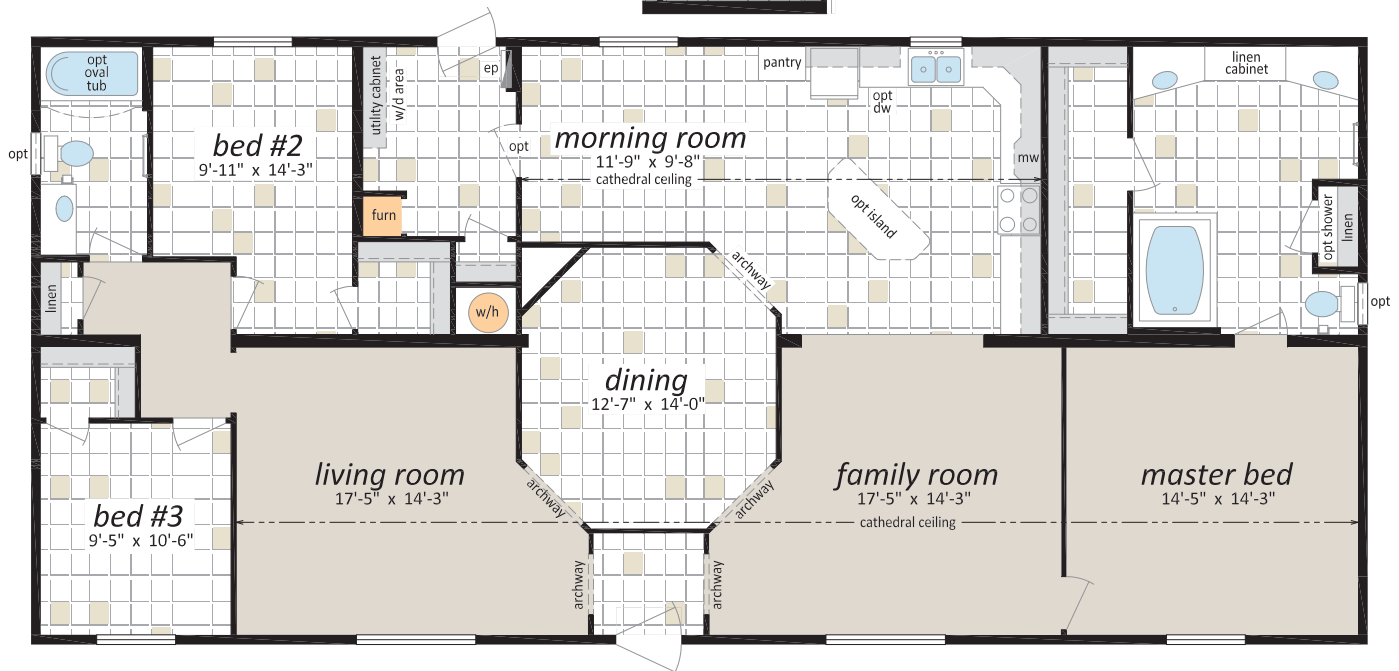
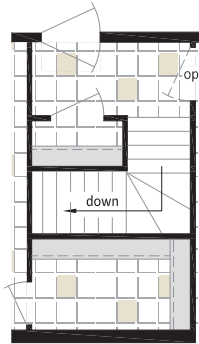
DE-372 • 30' X 64' • 1920 Sq. Ft.



Suggested Stairway  
Location for Basement  
Model

DE-373 • 30' X 66' • 1980 Sq. Ft.

Suggested Stairway  
Location for Basement  
Model



# The Design "5" Series

## Optional Features

### Exteriors

- ☐ Skylights
- ☐ Deluxe Garden Doors
- ☐ Patio Doors
- ☐ Sunburst Exterior Door
- ☐ Polyurethane Stone Accents
- ☐ Vinyl Shakes in Gable
- ☐ Octagon Windows
- ☐ "Aurora" Living Room Windows
- ☐ "Vista" Living Room Windows c/w Diamond Cut Ceiling
- ☐ "Panorama" Living Room Windows c/w Diamond Cut Ceiling
- ☐ "Moon Beam" Living Room Windows c/w Diamond Cut Ceiling
- ☐ Sequoia Select Upgrade Vinyl Siding
- ☐ Turbine Vents
- ☐ Extra Exterior GFI
- ☐ High Snow Load

### Interiors

- ☐ Painted Drywall Throughout Home
- ☐ Cathedral Ceiling in Master Bedroom
- ☐ Laminate Flooring
- ☐ Carpet in 2nd and 3rd Bedrooms
- ☐ French Doors
- ☐ Mirrored Closet Doors
- ☐ Freezer Cabinets
- ☐ Utility Room Door c/w Grill
- ☐ Ceiling Fan with Lights
- ☐ 2 - 4' Ceiling Mount or Recessed Fluorescent Lights
- ☐ Decora Switch Package
- ☐ Solid Wood Trim
- ☐ 2" PVC Blinds
- ☐ Programmable Thermostat
- ☐

### Kitchen

- ☐ Raised Panel Solid Wood Cabinet Doors
- ☐ Raised Panel PVC Cabinet Doors
- ☐ European Stainless Steel Rangehood
- ☐ Euro Cabinet Pulls
- ☐ Etched Glass Cabinet Doors
- ☐ China Cabinets and Hutches
- ☐ Pantry



### Kitchen (cont'd)

- ☐ Ceramic Tile Backsplash
- ☐ Oak Counter Edging
- ☐ Lazy Susan
- ☐ Tip Out Soap Tray Below Kitchen Sink
- ☐ 3 Bulb Track Light c/w Dimmer Switch
- ☐ 24" Fluorescent Light Above Kitchen Sink
- ☐ Pot and Pan Drawers
- ☐ Combination Microwave and Rangehood

### Utilities

- ☐ Gas Fireplace complete with Air Circulating Fan
- ☐ Electric Water Heater
- ☐ Electric Furnace
- ☐ Oil Gun Furnace
- ☐ Eye Level Oven and Cook Top Range
- ☐ Self Cleaning Range
- ☐ Two Door Side By Side Refrigerator
- ☐ Handi-Hite Bottom Mount Refrigerator
- ☐ Washer and Dryer (Standard or Front Loading)
- ☐ Stacking Washer and Dryer
- ☐ Built-In Dishwasher
- ☐ Central Vacuum System
- ☐ Roughed in for Central Vacuum
- ☐ Air Conditioner Ready Furnace
- ☐ 2 1/2 Ton Air Conditioner
- ☐ Extra Telephone Jacks
- ☐ Surge Protector
- ☐ Shut Off Valves on All Fixtures
- ☐ Garage Ready Package
- ☐ 200 Amp Service Panel

### Bathroom

- ☐ Ceramic Tile Backsplash
- ☐ Jetted Oval Tub
- ☐ Jetted One Piece Tub and Shower
- ☐ 60" Shower c/w Glass Doors
- ☐ Handicap Toilet
- ☐ Grab Bars



## The Design "5" Series

### Sectional Homes



**Intertek**



Authorized Retailer:



P.O. Box 845, #200 Highway 18 West  
Estevan, SK S4K 2A7

[www.shelterhomes.ca](http://www.shelterhomes.ca)