

The Urban Series

22' Wide Homes





WHY SRI?

The Estevan Plant, for over 35 years has been supplying affordably priced, quality built homes to Canadian families.



CHOICES

The Urban Series boasts 22' wide of floorspace in a single section giving you multitudes of options for design and layout. After that, the decor choices begin. Lino, carpet, laminate, draperies, cabinets, etc. etc.



QUALITY & AFFORDABILITY

The Urban Series has standard features such as stainless steel appliances, laminate flooring in the kitchen and dining room as well as raised panel cabinets. There are also many optional features that you can add for that special look. Additionally, every SRI home is covered by a ten year warranty supplied by Progressive Home Warranty.



There are also many optional features that you can add for that special look. Additionally, every SRI home is covered by a ten year warranty supplied by Progressive Home Warranty.

ARE YOU READY . . .

. . . to explore
the Urban Series
of Homes?



Standard Specifications

Exterior

- ⇒ Architectural Fiberglass Shingles(30 Year Warranty)
- ⇒ Engineered Roof Trusses
- ⇒ Perimeter Eave and Continuous Ridge Venting
- ⇒ 12" Residential Eaves on 4 Sides
- ⇒ Maintenance Free Full Vinyl Siding
- ⇒ 8' Walls/Ceilings
- ⇒ 2 X 6 @ 24" O.C. Outside Walls
- ⇒ 3/8" OSB Sheathing Inside and Outside of Exterior Walls
- ⇒ Engineered "I-Joist" Floor System
- ⇒ Weatherproof Exterior Receptacle Protected w/GFI
- ⇒ Frost Free Tap c/w Check Valve
- ⇒ White Coach Lights at all Exterior Doors
- ⇒ Coloured Metal Fascia
- ⇒ 36" Insulated Front Door C/W Peephole
- ⇒ 32" Insulated Rear Door C/W Peephole
- ⇒ Aluminum Storm Doors
- ⇒ White Pvc "Low E" Windows with Screens

Kitchen

- ⇒ Stainless Steel 18 Cu. Ft. Two Door Fridge
- ⇒ Stainless Steel 30" Electric Range
- ⇒ Stainless Steel Dishwasher
- ⇒ Double Stainless Steel Kitchen Sink
- ⇒ Single Lever Faucets
- ⇒ Two Speed Range Hood Vented to Exterior
- ⇒ Rolled Drawer Hardware
- ⇒ Bank of Drawers

Bath

- ⇒ GFI Receptacle
- ⇒ Dehumidistat on Main Bath Fan
- ⇒ One Piece Wall Tub/Shower in Main Bath
- ⇒ Single Lever Faucets
- ⇒ White Bath Fixtures
- ⇒ Shower Rod and Curtain in all Bathrooms
- ⇒ Oval Tub in Ensuite Bath
- ⇒ Separate 36" Shower in Ensuite Bath
- ⇒ Pewter Towel Bar and Paper Holder
- ⇒ Shut Off Valves on all Fixturess

Doors and Windows

- ⇒ 36" Insulated Front Door c/w Peephole
- ⇒ 32" Insulated Rear Door c/w Peephole
- ⇒ Aluminum Storm Doors
- ⇒ White Classique Interior Doors
- ⇒ White PVC "Low E" Windows with Screen

Interior

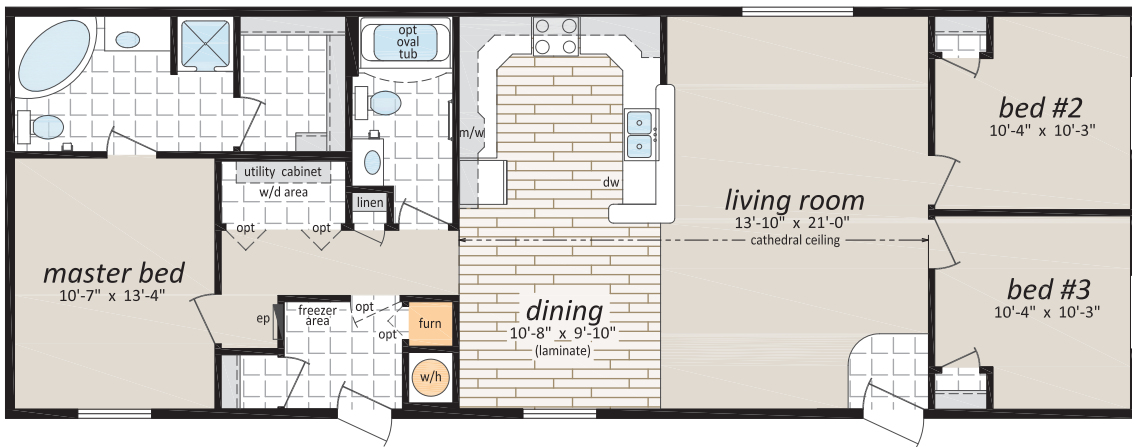
- ⇒ T&G Osb Floor Decking - Glued and Screwed
- ⇒ R-40 Insulation in Ceiling
- ⇒ R-20 Insulation in Walls
- ⇒ R-26 Insulation in Floors
- ⇒ 6 Mil Poly Vapour Barrier in Ceilings and Sidewalls
- ⇒ Spraytexed 1/2" Sr Gyproc Ceilings
- ⇒ 100% Polyurethane Carpet in Living Room and all Bedrooms
- ⇒ No Wax Vinyl Flooring
- ⇒ 12.3mm Laminate Flooring in Kitchen/Dining Room
- ⇒ Copper Wiring Throughout
- ⇒ Utility Cabinets above Washer and Dryer
- ⇒ Wire Closet Shelving
- ⇒ Pewter Hardware Package Throughout
- ⇒ Designer Drapery Package Including Blinds on all Windows
- ⇒ Cathedral Ceiling in Kitchen, Dining Room and Living Room
- ⇒ Raised Panel Cabinets Throughout
- ⇒ Euro Cabinet Pulls Throughout
- ⇒ Lever Door Handles T/O
- ⇒ Trim around Windows and Doors
- ⇒ Trim along Base and Ceiling

Utilities

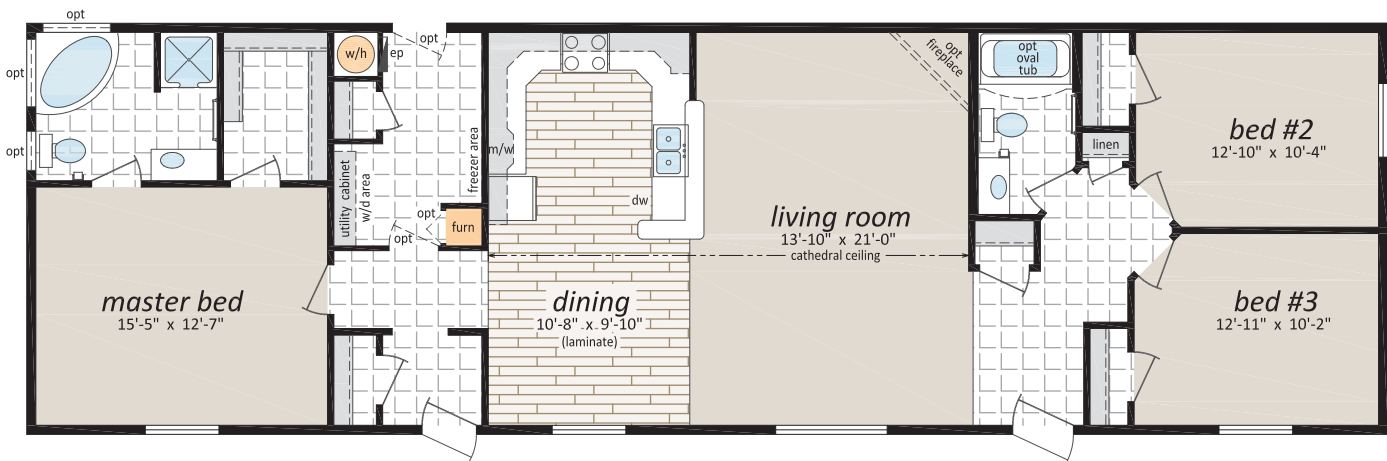
- ⇒ Smoke/Co Alarms with Battery Back Up in Hallways
- ⇒ Smoke Alarm in all Bedrooms
- ⇒ 40 Gallon Electric Water Heater
- ⇒ Electric Furnace
- ⇒ 200 Amp Electric Service Panel
- ⇒ Electrical Conduit through Floor
- ⇒ Light Bulb Package



UN-22601, 22'x60', 1,320 sq. ft., 3 Bedrooms, 2 Bathrooms



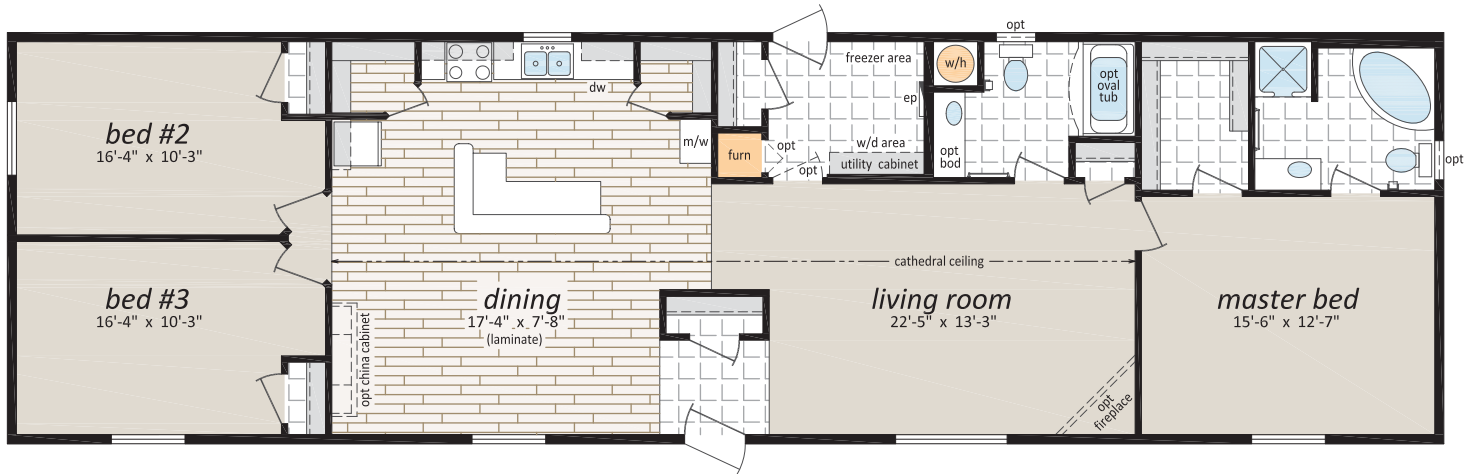
UN-22721, 22'x72', 1,584 sq. ft., 3 Bedrooms, 2 Bathrooms



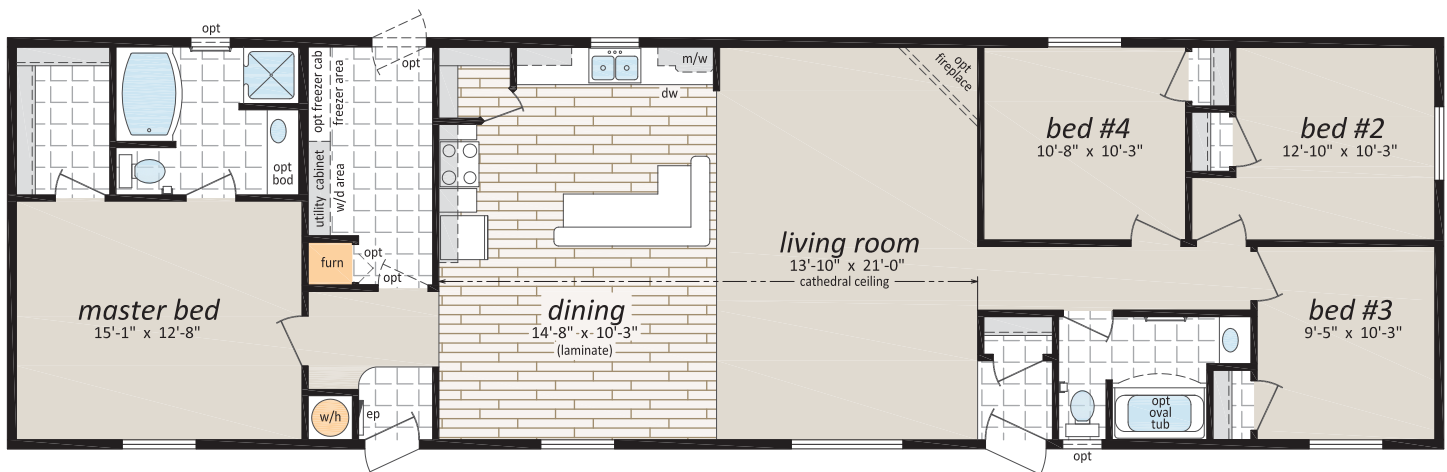
UN-22761, 22'x76', 1,672 sq. ft., 3 Bedrooms, 2 Bathrooms



UN-22762, 22'x76' 1,672 sq. ft., 3 Bedrooms, 2 Bathrooms



UN-22763, 22'x76', 1,672 sq. ft., 4 Bedrooms, 2 Bathrooms

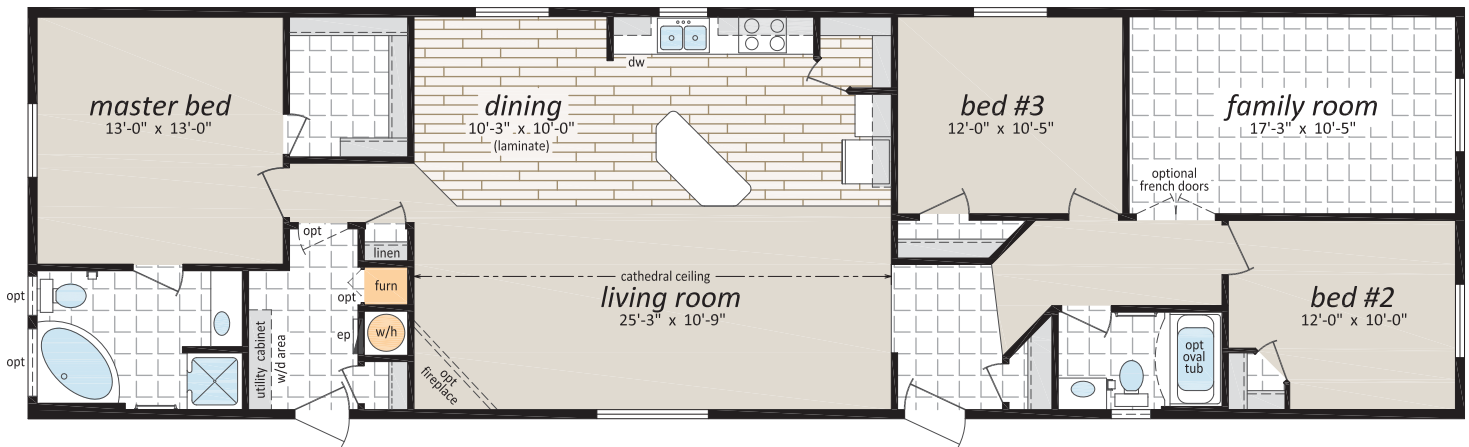


Did you know?

Shelter Home Systems began building homes for Canadians in 1978?



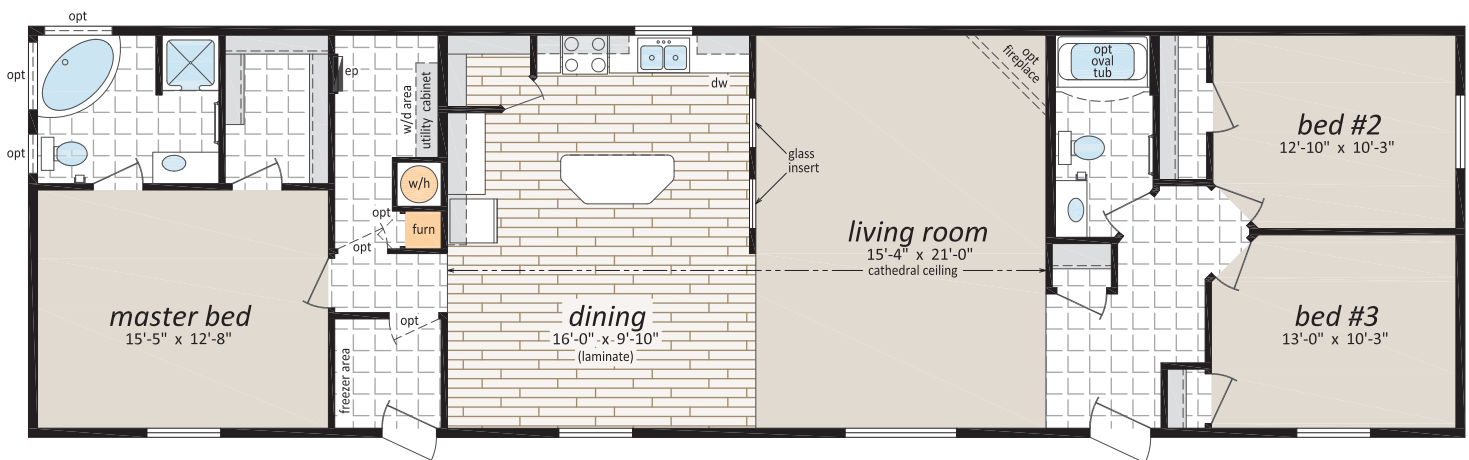
UN-22764, 22'x76' 1,672 sq. ft., 3 Bedrooms, 2 Bathrooms



Did you know?

Every SRI home has a one year SRI Manufacturer's Warranty as well as a ten year structural warranty?

UN-22765, 22'x76' 1,672 sq. ft., 3 Bedrooms, 2 Bathrooms



Optional Features

Exteriors

- ☐ Skylights
- ☐ Deluxe Garden Doors
- ☐ Patio Doors
- ☐ Sunburst Exterior Door
- ☐ Polyurethane Stone Accents
- ☐ Vinyl Shakes in Gable
- ☐ Octagon Windows
- ☐ "Aurora" Living Room Windows
- ☐ "Vista" Living Room Windows c/w Diamond Cut Ceiling
- ☐ "Panorama" Living Room Windows c/w Diamond Cut Ceiling
- ☐ "Moon Beam" Living Room Windows c/w Diamond Cut Ceiling
- ☐ Sequoia Select Upgrade Vinyl Siding
- ☐ Turbine Vents
- ☐ Extra Exterior GFI
- ☐ High Snow Load

Interiors

- ☐ Painted Drywall Throughout Home
- ☐ Cathedral Ceiling in Master Bedroom
- ☐ Laminate Flooring
- ☐ Carpet in 2nd and 3rd Bedrooms
- ☐ French Doors
- ☐ Mirrored Closet Doors
- ☐ Freezer Cabinets
- ☐ Utility Room Door c/w Grill
- ☐ Ceiling Fan with Lights
- ☐ 2 - 4' Ceiling Mount or Recessed Fluorescent Lights
- ☐ Decora Switch Package
- ☐ Solid Wood Trim
- ☐ 2" PVC Blinds
- ☐ Programmable Thermostat

Bathroom

- ☐ Ceramic Tile Backsplash
- ☐ Jetted Oval Tub
- ☐ Jetted One Piece Tub and Shower
- ☐ 60" Shower c/w Glass Doors
- ☐ Handicap Toilet
- ☐ Grab Bars

Kitchen

- ☐ Raised Panel Solid Wood Cabinet Doors
- ☐ European Stainless Steel Rangehood
- ☐ Etched Glass Cabinet Doors
- ☐ China Cabinets and Hatches
- ☐ Under Cabinet Lighting
- ☐ Upgrade High Definition Laminate Countertops
- ☐ Ceramic Tile Backsplash
- ☐ Oak Counter Edging
- ☐ Tip Out Soap Tray Below Kitchen Sink
- ☐ 3 Bulb Track Light c/w Dimmer Switch
- ☐ 24" Fluorescent Light Above Kitchen Sink
- ☐ Pot and Pan Drawers
- ☐ Combination Microwave and Rangehood

Utilities

- ☐ Gas Fireplace complete with Air Circulating Fan
- ☐ Gas Water Heater
- ☐ Gas Furnace
- ☐ Oil Gun Furnace
- ☐ Self Cleaning Range
- ☐ Two Door Side By Side Refrigerator
- ☐ Handi-Hite Bottom Mount Refrigerator
- ☐ Washer and Dryer (Standard or Front Loading)
- ☐ Stacking Washer and Dryer
- ☐ Front Load Washer and Dryer
- ☐ Central Vacuum System
- ☐ Roughed in for Central Vacuum
- ☐ Air Conditioner Ready Furnace
- ☐ 2 1/2 Ton Air Conditioner
- ☐ Extra Telephone Jacks
- ☐ Surge Protector
- ☐ Garage Ready Package



The Urban Series

22' Wide Homes



SHELTER
HOME SYSTEMS

Authorized Retailer:



P.O. Box 845 #200 Hwy 18 West
Estevan, SK S4A 2A7
www.shelterhomes.ca

Follow us: 